

# WMI

## Warsaw/Modlin Airport

02.2014

# Airport location and surface transport

# Where are we ?



# Where are we ?

# Mazovia Voivodship



0 10km 20km 30km

**LEGEND:**

	Highway due preparation
	Expressway due preparation
	Existing highway
	Existing expressway
	High speed road
	Road beginning/road end
	Country level road
	Province level road
	City name

PIASECZNO

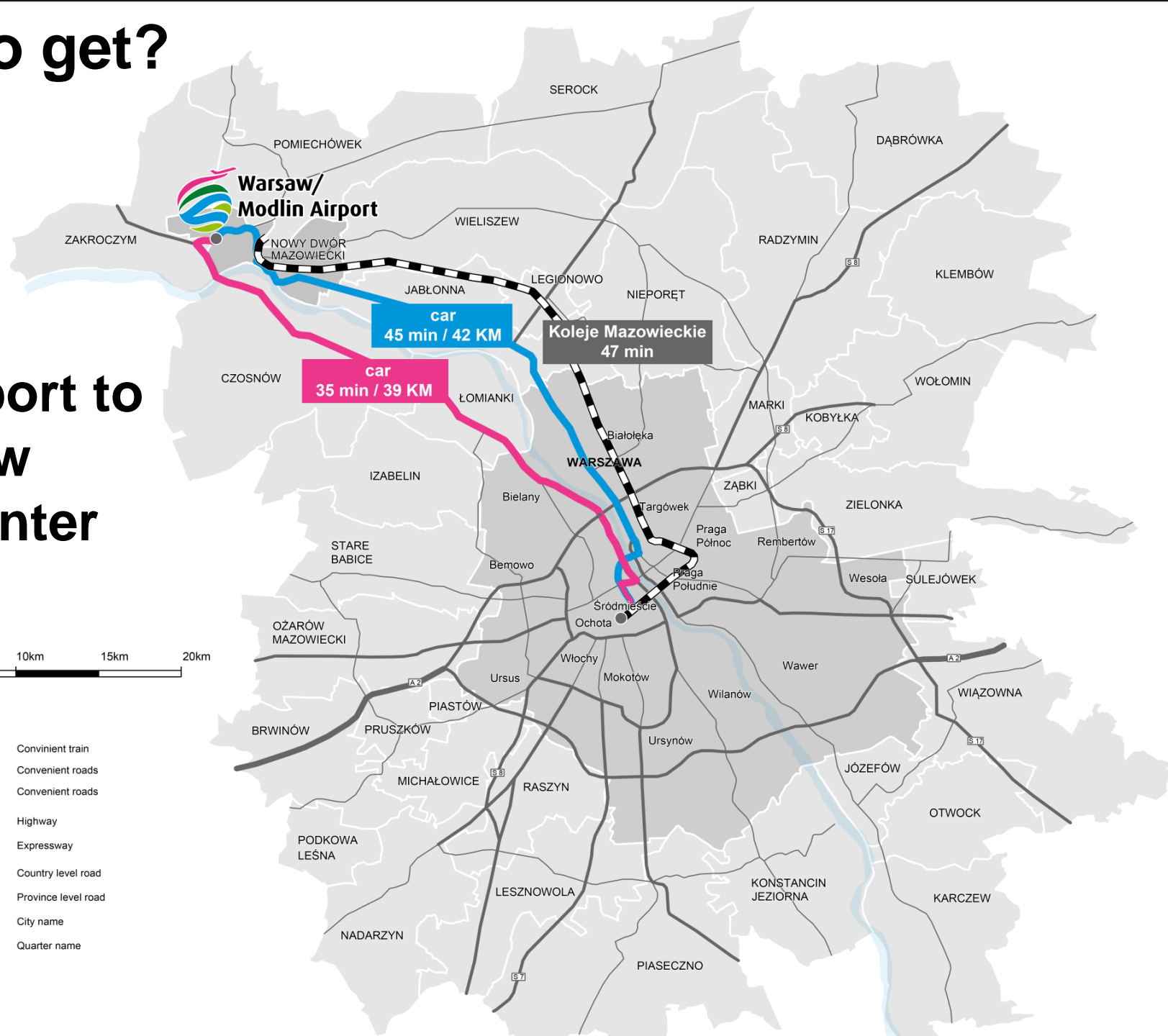
# How to get?

## Transport to Warsaw city center



### LEGEND:

- Convenient train
- Convenient roads
- Convenient roads
- Highway
- Expressway
- Country level road
- Province level road
- PIASECZNO**  
Ursus
- City name
- Quarter name



# How to get from Warsaw?



**Two-lane highway** connects airport with Warsaw – **35-40 minutes** to get to city center



**Rapid bus** – [www.modlinbus.pl](http://www.modlinbus.pl) – **timetabel** adjusted to flights schedule, 24h, 7 days a week from city center via last underground station, directly to the terminal

- **From IV 2014 with no stop – direct 40 minutes access from PKiN**



**Koleje Mazowieckie** - **42 minutes** access to Modlin train station from Warsaw city center + shuttle bus – 5 minutes drive from train station to the terminal - free of charge

- **Departure in regular intervals every 1h**

**S7**  **Warsaw/Modlin Airport**

**39KM**

**Warsaw**

- **39 km from Warsaw PKiN**
- **1 km from express road S7**
- **Near national roads 61 and 62**



# How to get from other cities?



**Two-lane highway** connects airport and **Gdańsk** (300 km)

National roads to major cities in region: **Płock** (130K citizens), **Ostrołęka** (55K) and **Łomża** (65K)



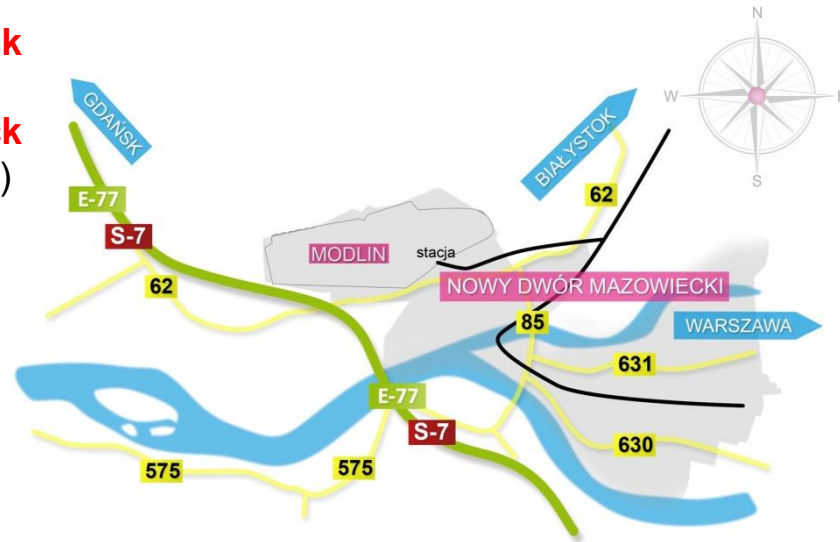
**Long-distance buses** – several regular lines already to: **Łódź** (700k citizens), **Białystok** (300K citizens), **Olsztyn** (180K citizens), **Suwałki** (70K citizens), **Łomża** (65k citizens)

**New regular connections to major cities soon**



**TLK – low-cost train carrier** – stops at Modlin train station coming from:

1. **Olsztyn, Nidzica, Mława**
2. **Kołobrzeg, Koszalin, Słupsk, Gdańsk,**
3. **Bielsko-Biała, Katowice, Częstochowa, Radomsko, Piotrków Tryb.**
4. **Kraków, Kielce, Radom**



- 1 km from express road
- Near national roads 61 and 62
- 70 km from Płock

# Our catchment area

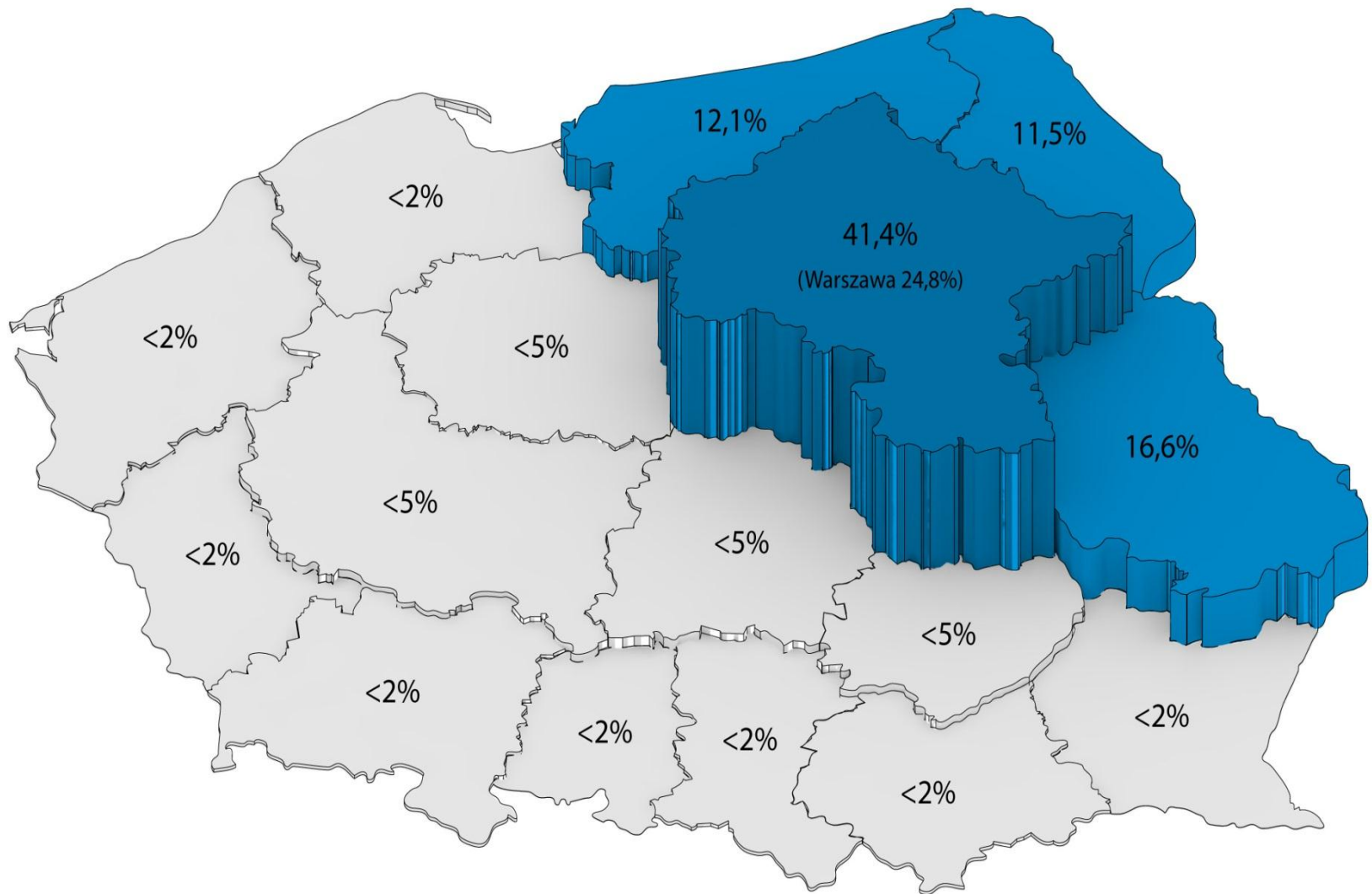


# The market – Catchment area



- 5,8M people within 2 hours drive
- **3M people within 1 hour drive**
- 4,95M people within 100 km radius
- **2,6M in Warsaw urban area**
- **Enhanced catchment area of over 7.5M in Poland**
  - Mazovia – 42 %  
**and 24,8 % from Warsaw**
  - Lubelskie – 16 %
  - Warminsko-Mazurskie – 12 %
  - Podlaskie – 11 %
- **Ukraine, Russia, Belarus, Lithuania – 7,8 %**

# The market – Catchment area



# Passenger Profile



- AVG age – 34 years
- 26,5 % are students
- 37,5 % with higher education
- 36,7 % travels 2-3 times a year
- 13 % have own companies
- >50% declares vacations > 2 a year

- **Purpose of travel:**
  - 42 % visiting friends & relatives
  - 24,7 % for holidays & leisure
  - 20,8 % for work and business

- **Household income:**
  - 13 % 4-6.000 PLN (1-1.5.00 EUR)
  - 11 % >10.000 PLN (2.500 EUR)

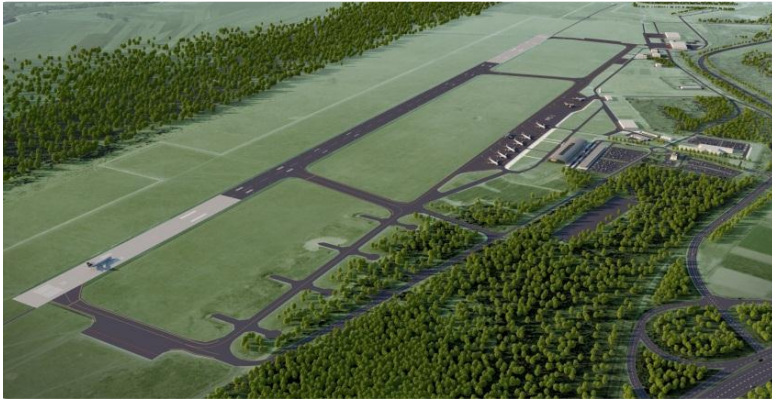
- 160 000 PAX per month  
(average in 2012)

- Over 1,6 mln PAX a year  
(traffic forecast for 2014)

# Airport infrastructure



# The Airport – Infrastructure



## Runway

- 2,500 x 60 metres

## Apron

- 10 stands for B737/A320 and 3 additional at de-icing apron

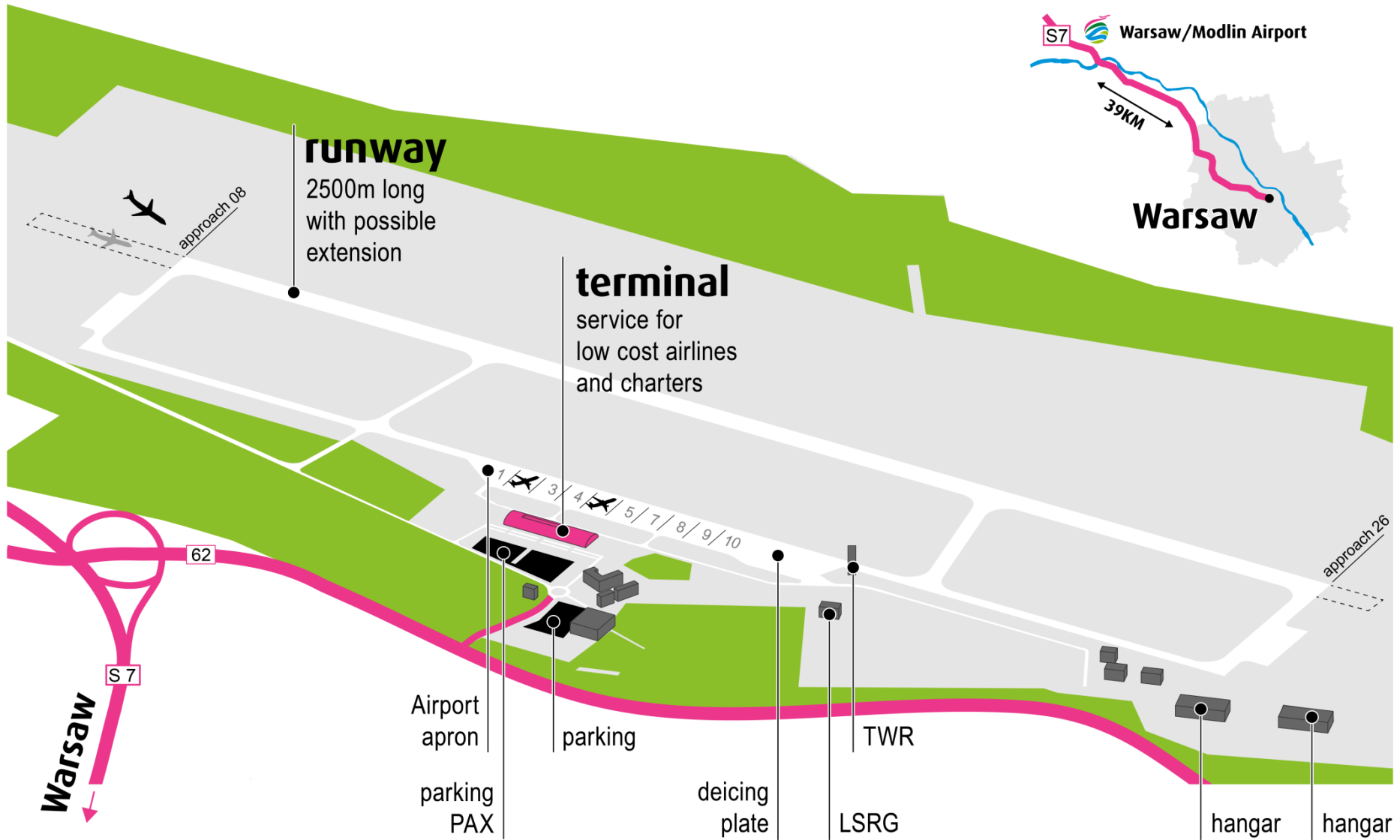
## Navigation aids

- DVOR/DME
- ILS CAT. I in August 2013
- ILS CAT. II in 2Q 2014 – as first regional airport in Poland



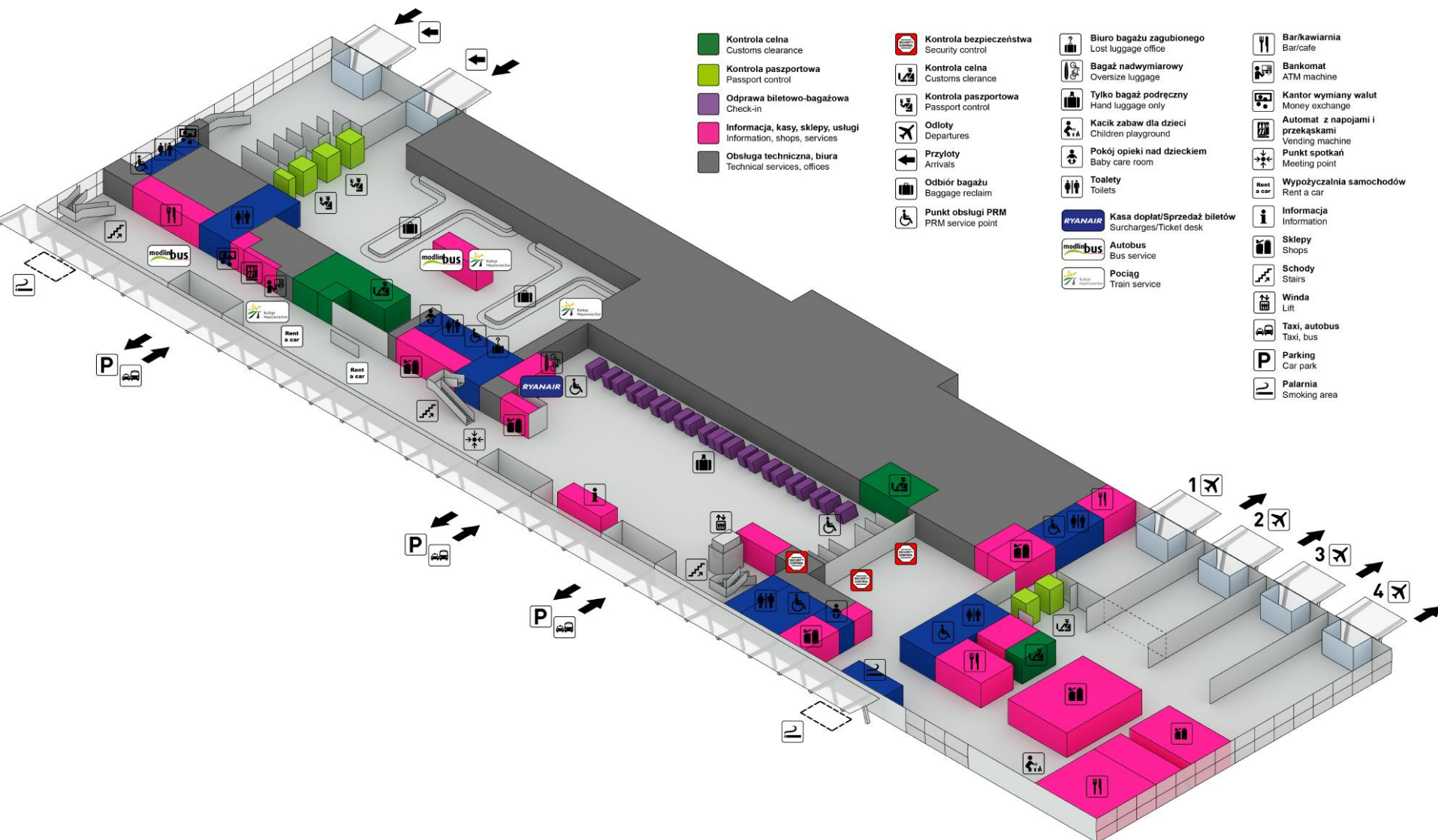
Refference points	52°27'04" N, 020°39'07" E
ICAO code	EPMO
IATA code	WMI
Actual terminal capacity [h]	700 PAX DEP
Theoretical airside capacity[h]	12-15 MOV
Current max number of operations [h]	6 MOV
Theoretical current airport capacity	3,65 mln PAX and 24 000 MOV
Main landing direction	08 (081°)
Auxiliary landing direction	26 (261°)
Runway length	2500 m
Airstripe lenght	2920 m
Runway width	60 m
Airstripe width	300 m
Runway operational width	45 m
Apron stands	10 code C stands at main apron and 3 additional code C (2 code D) at de-icing apron
Main taxi-way	TW A1 i A2 18 m width each with ligths A3 17 m width , paralel to RWY
Other taxi-ways	Modernized DK B i C 23 m width with lights; planed for modernization DK D 16 m width and E 18 m width
PCN	DS 53, DK 53, PPS 53
Navigation aids	ILS CAT. II at RWY 08, DVOR/DME, PAPI lights, ALPA-PATA lights at RWY 08 and „cross” at RWY 26

# The Airport - Infrastructure





# The Airport – PAX Terminal





































© Jacek Chlebowski

EPMO SPOTTERS  
epmo-spotters.pl







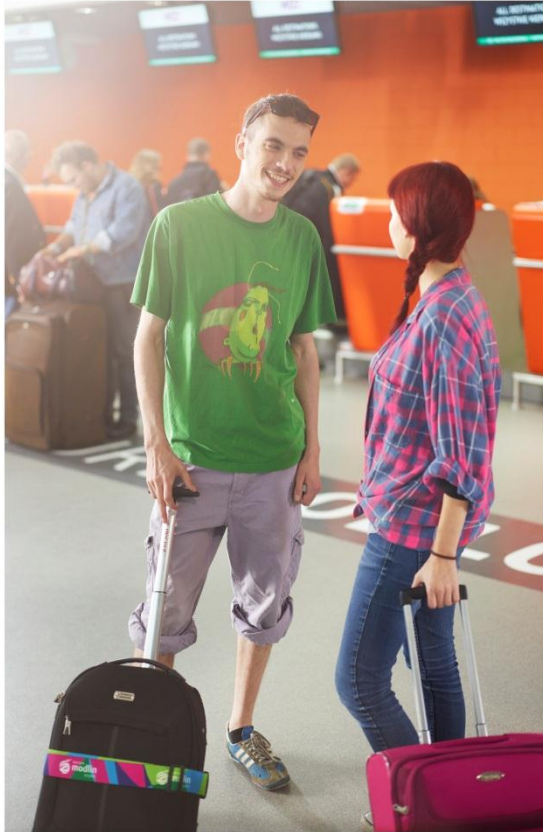
Mariusz Kociński epmo-spotters.pl

# Warsaw/Modlin Airport – business surrounding





# The Airport – competitive advantages



- Convenient gateway to most affluent market and most popular destination in Poland
- Competitive airport and infrastructure charges
- Flexibility – open for our business partners' propositions
- No slot regulation and slot availability
- Absence of night time restrictions
- 24h non-stop opening time
- Low turnaround times
- Range of surface transport possibilities
- New facilities designed around the needs of passengers



# Contact details



## Mazowiecki Port Lotniczy Warszawa-Modlin sp z o.o.

Gen. Wiktora Thommee 1a Street  
05-102 Nowy Dwór Mazowiecki  
tel.: + 48 22 346 40 00  
fax + 48 22 346 40 05  
e-mail: [info@modlinairport.pl](mailto:info@modlinairport.pl)

**Piotr Lenarczyk**  
**Acting Head of**  
**Commercial-Marketing Office**

tel: + 48 22 346 40 24

fax: + 48 22 346 40 29

e-mail: [p.lenarczyk@modlinairport.pl](mailto:p.lenarczyk@modlinairport.pl)





*The information in this presentation is confidential and may be legally privileged, it contains information that is confidential to Mazowiecki Port Lotniczy Warszawa-Modlin sp. z o.o. It is intended solely for the addressee. Any access to this information by third parties is unauthorized.*